

How do I use Alexa to control Roborock?

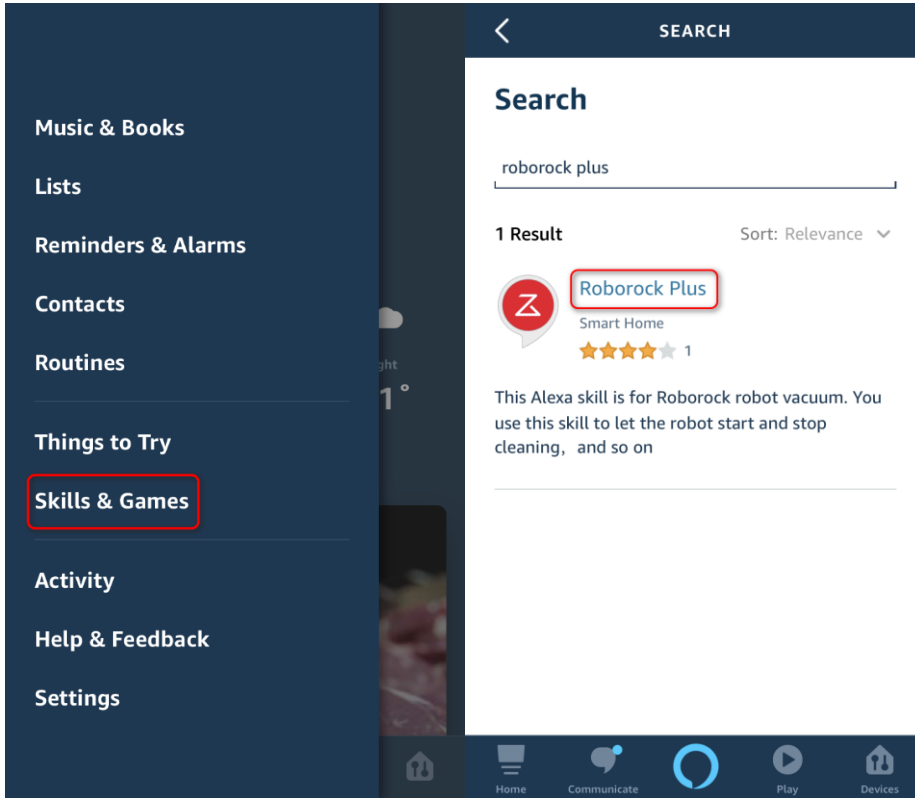
If you' re using Roborock app, pls download the Roborock Plus skill.

If you' re using Mi home app, pls download the Roborock home skill.

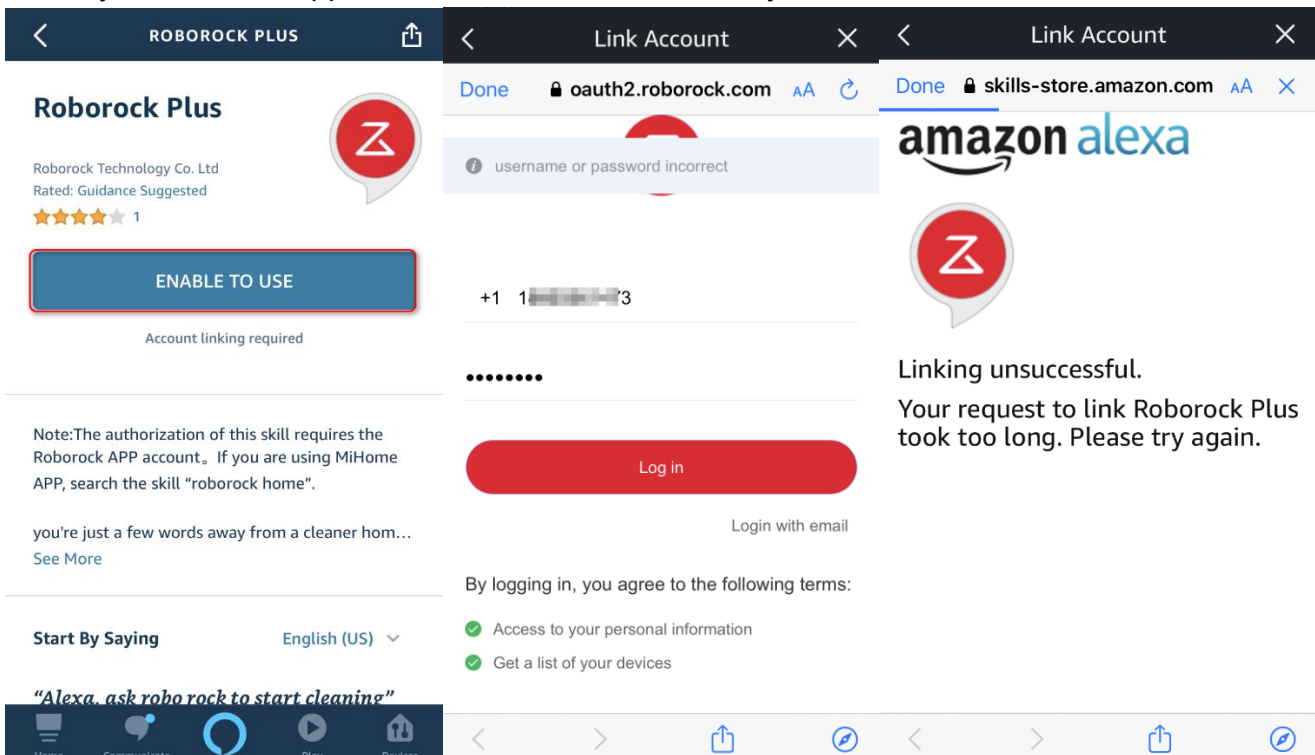
Roborock app user:

Note: Make sure your robot is added and online on app Roborock first.

1.Go to "Skills & Games" then search for "Roborock Plus" on Alexa app.

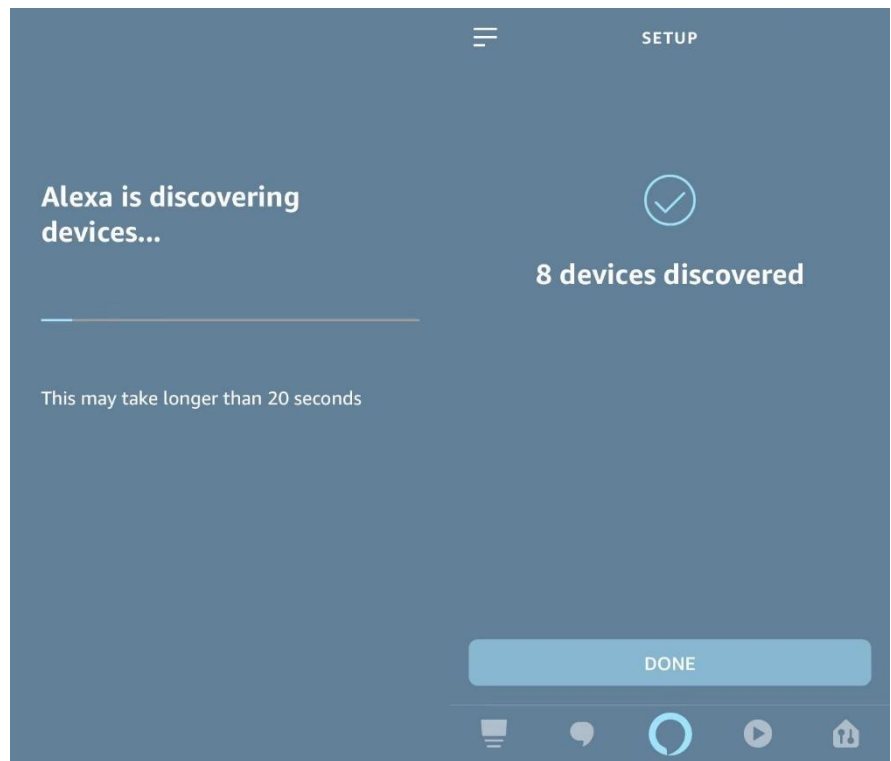


2. Link your Roboock app to Alexa to discover devices in your Roborock account that Alexa can control.

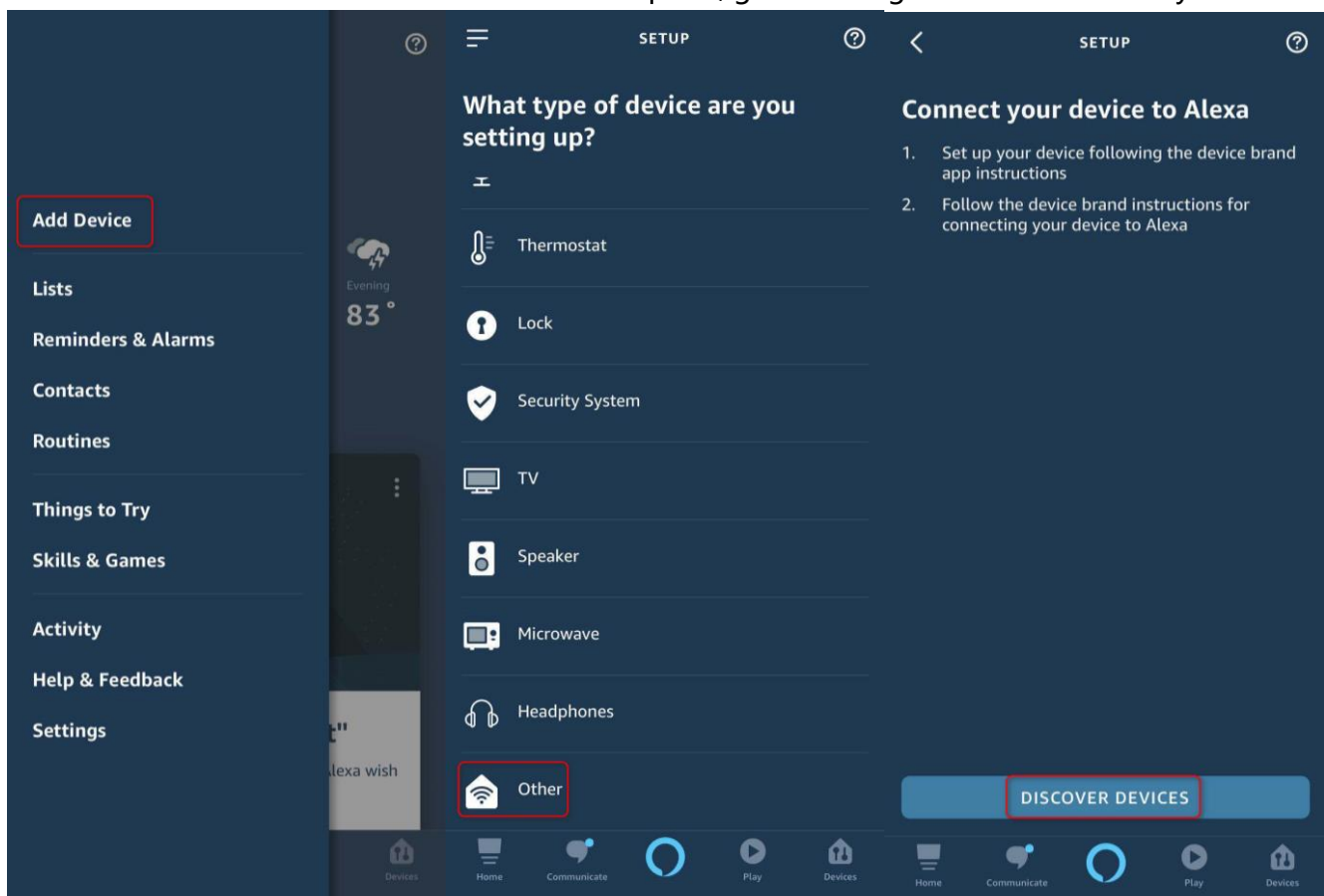


Discover Devices

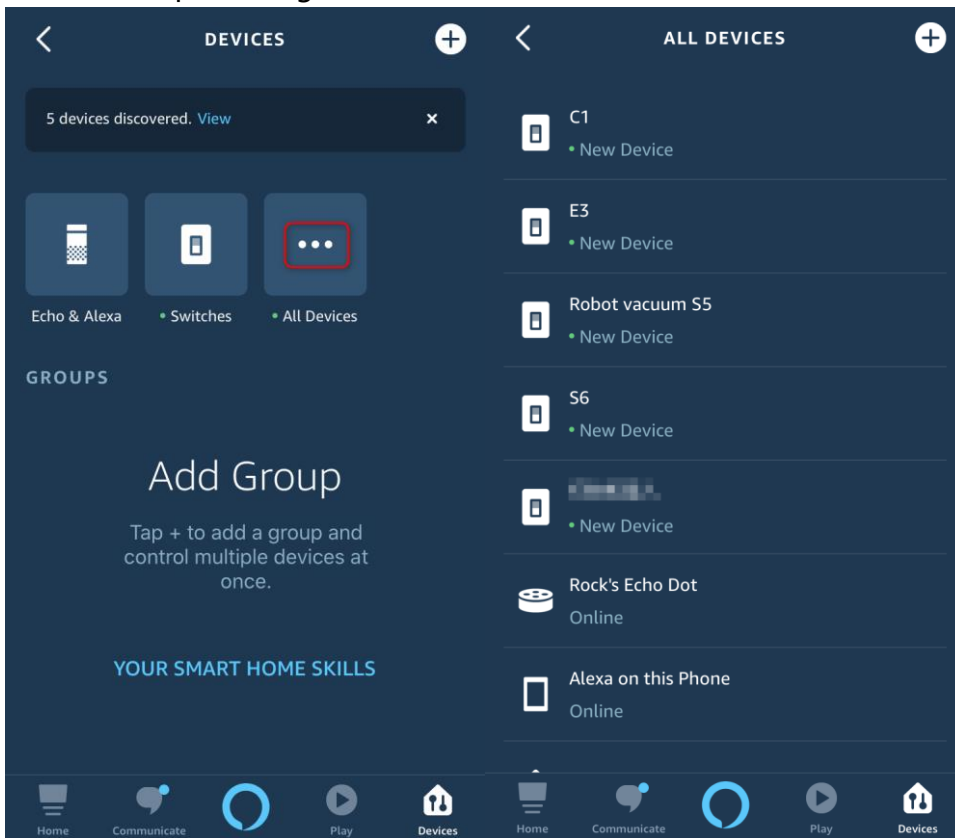
Smart Home devices must be discovered before they can be used with Alexa.



3. If Alexa does not show “discover devices” option, go to setting to discover manually.



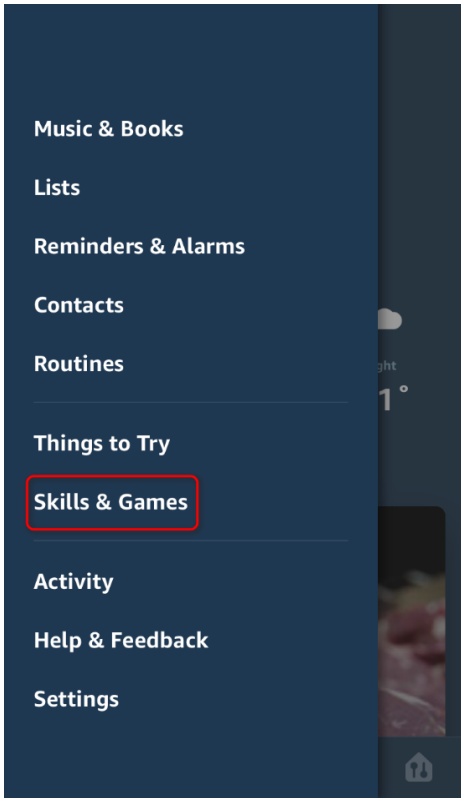
4. Go to devices list and check if the robot appears and now you can use your Alexa smart speakers to start and stop cleaning.



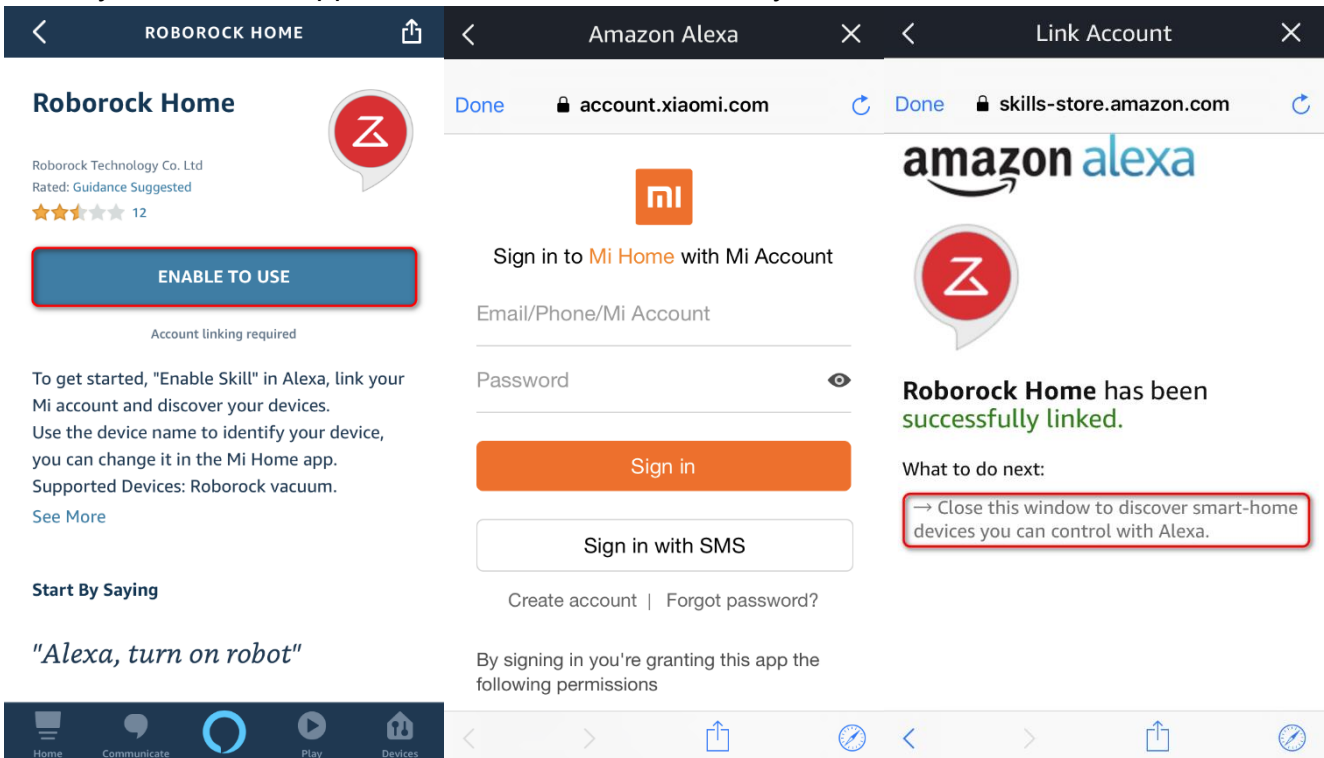
Mi home user:

Note: Make sure your robot is added and online on app Mi Home first.

1. Go to "Skills & Games" then search for "Roborock Home"

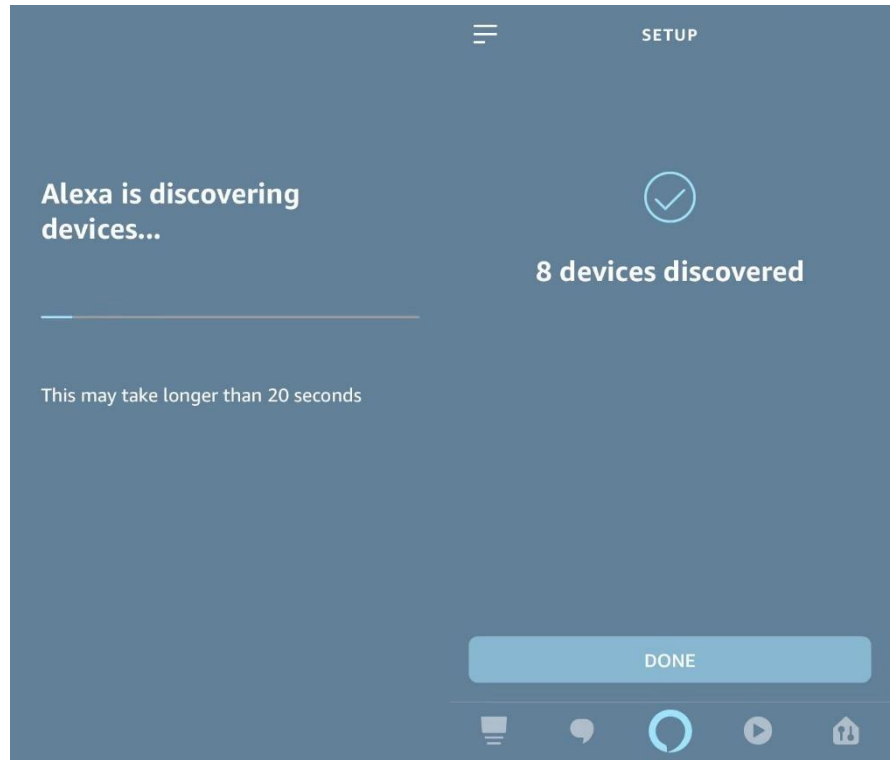


2. Link your Mi Home app to Alexa to discover devices in your Mi Home account that Alexa can control.

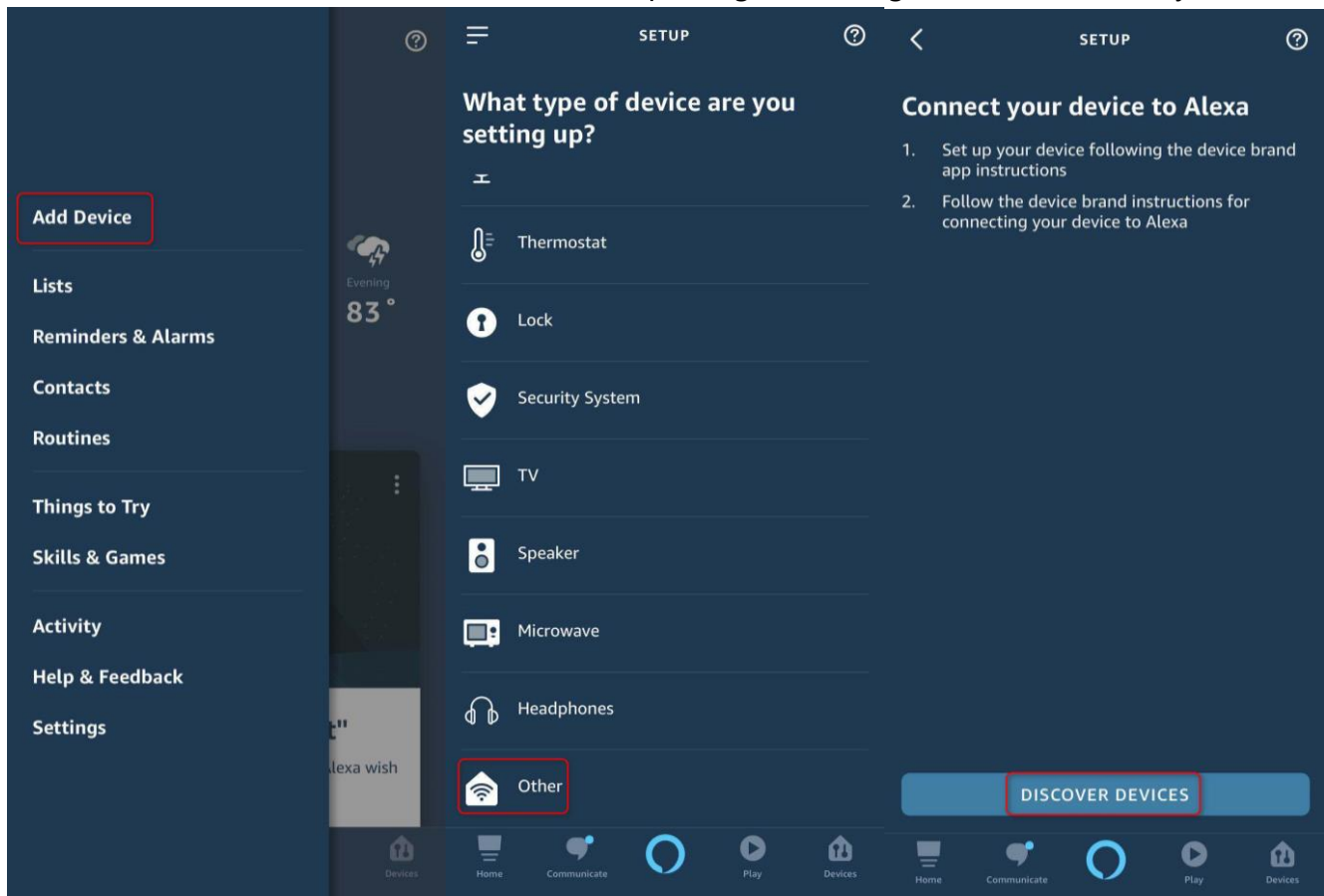


Discover Devices

Smart Home devices must be discovered before they can be used with Alexa.



3. If Alexa does not show “discover devices” option, go to setting to discover manually.



4. Go to devices list and check if the robot appears and now you can use your Alexa smart speakers to start and stop cleaning.

