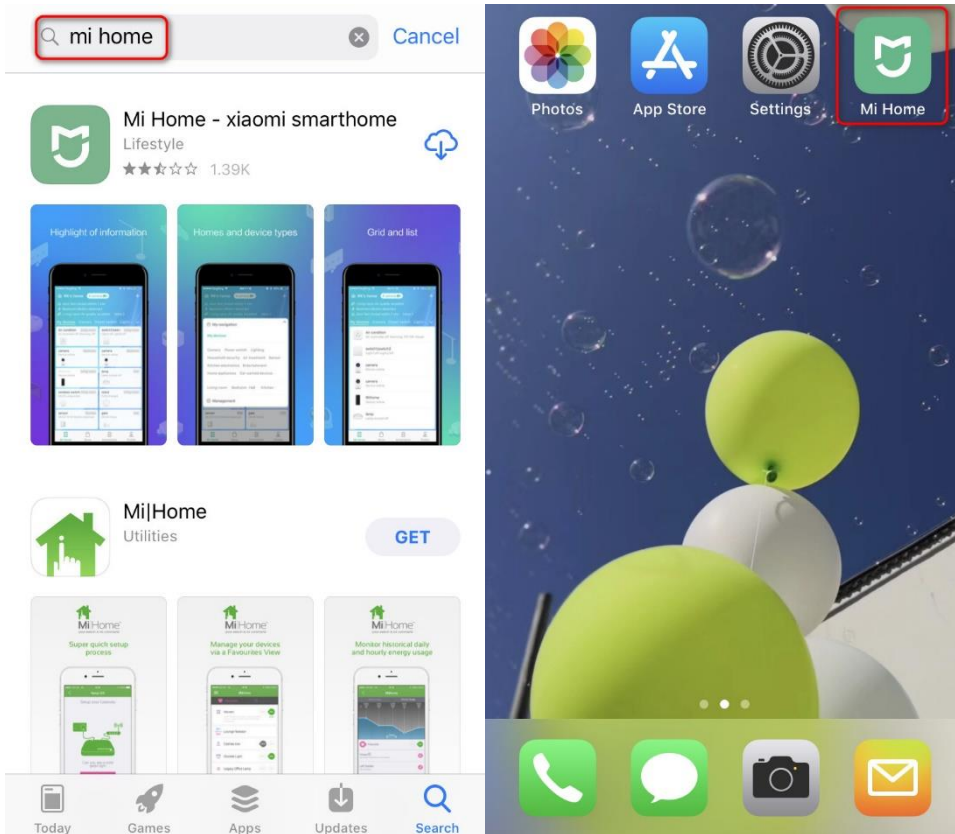
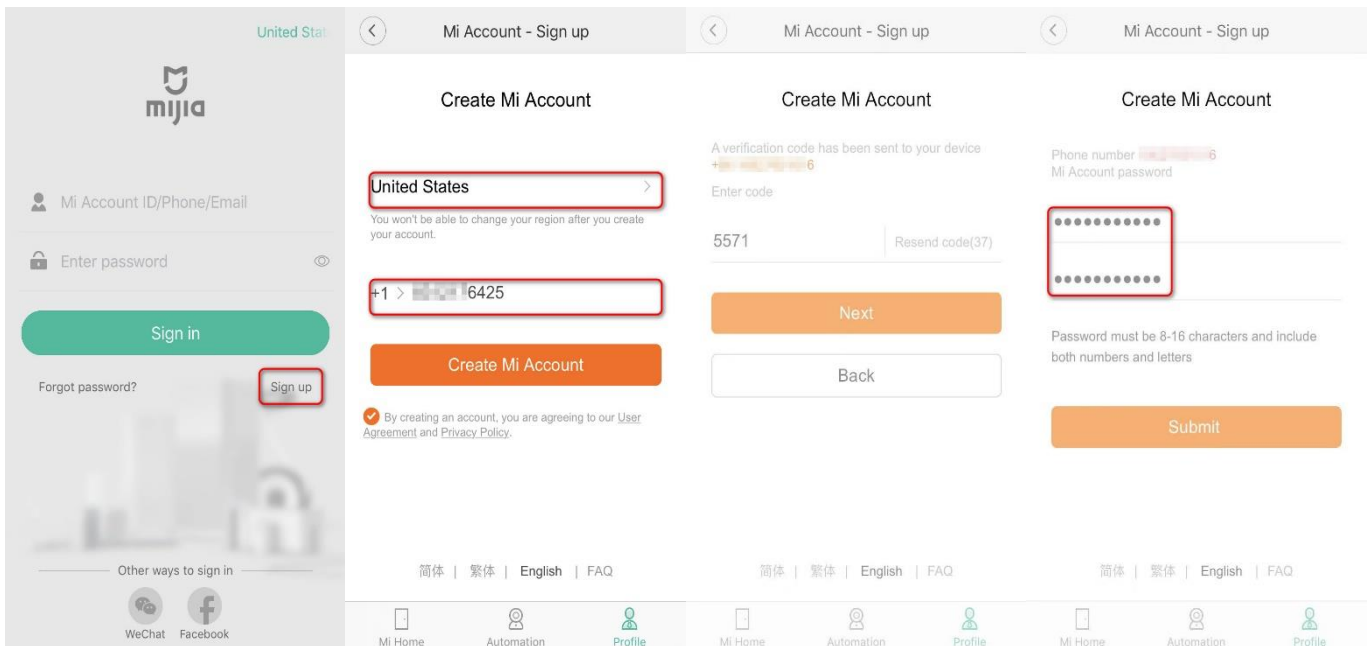


How do I connect my Roborock device to Wi-Fi on an iOS device?

1. Download the Mi Home(Xiaomi Home) from the App Store.



2. Register for a Mi Home account using your phone number (Skip this step if you already have a Mi account).



3. Add Roborock Device

Notes:

- a. Make sure your phone is already connected to Wi-Fi;*
- b. Open the top of your cleaner to see the Wi-Fi indicator light during the connection process.*

- 3.1 Sign in to you Mi Home account.
- 3.2 Tap the “+” icon to add a device.
- 3.3 Select your device’ s model from the “Home appliance” category.

Model number on device label	Model you should select on APP
S5xx-xx	Roborock S5
E2xx-xx E3xx-xx	Xiaowa E Series
S6xx-xx	Roborock S6
C1xx-xx	Xiaowa C1
Mi	Mi Robot Vacuum
Mi 1S	Mi Robot Vacuum 1S

- 3.4 Check “Operation confirmed” .



Reset device

RoboRock vacuum

If you can't connect to the vacuum for any other reason, open the vacuum's cover so you can see the Wi-Fi indicator, then press and hold spot button and dock button simultaneously until you hear the voice prompt "Resetting Wi-Fi". Wait until the Wi-Fi indicator starts blinking to finish resetting.



After you reset wifi, check this option first. Then tap next.

If the option is not checked, tap next doesn't respond.

Operation confirmed

Next

3.5 Select your home Wi-Fi and input your Wi-Fi password.

Cancel Select Wi-Fi network



yourhomewifi

yourwifipassword

Hide password

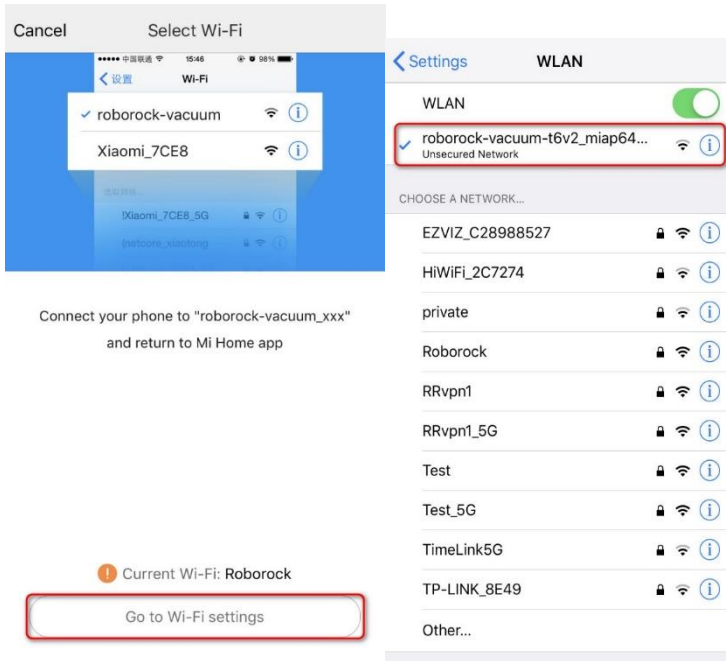
! 5G Wi-Fi not supported

[Switch Wi-Fi networks](#)

Next

3.6 Tap “Go to Wi-Fi Settings” .

3.7 Select Wi-Fi network named roborock-vacuum-xxx to connect.

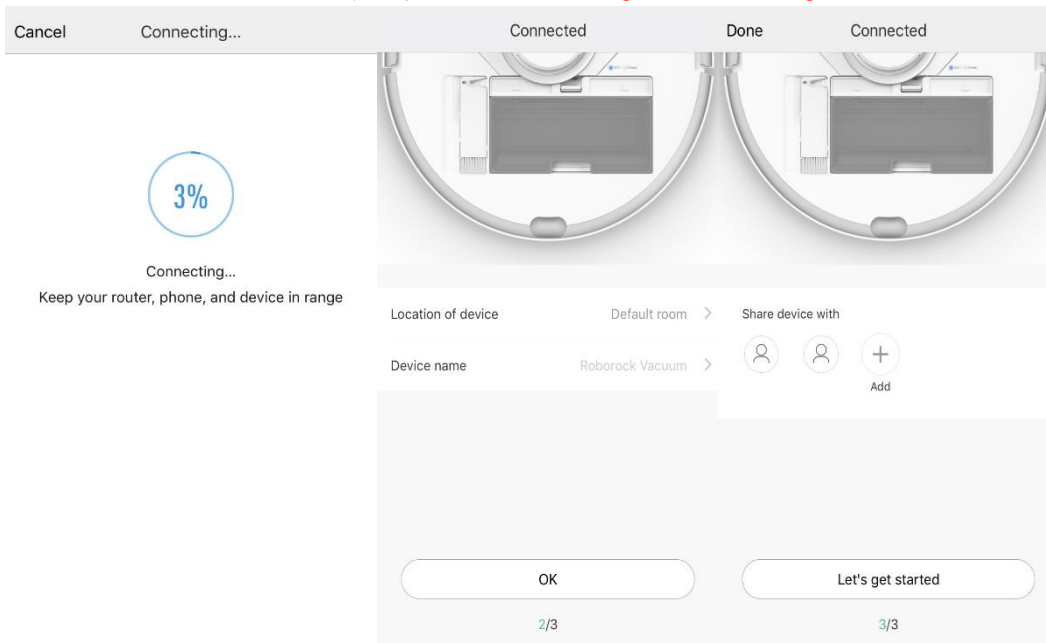


3.8 Go back to the Mi Home app and the connection interface will appear. Wait until it reaches 100%.

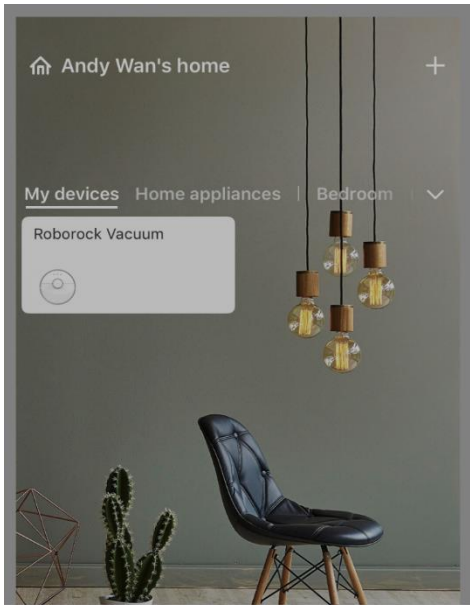
3.9 Select the location of device and give it a name.

Note:

The Wi-Fi indicator on the top of your vacuum will go from flashing to solid if it has connected successfully.



4. Tap the device in the Mi Home homepage to Access device to operate and wait until initializing reaches 100%.



Rorobrock Vacuum



Initializing device 22%

Cancel