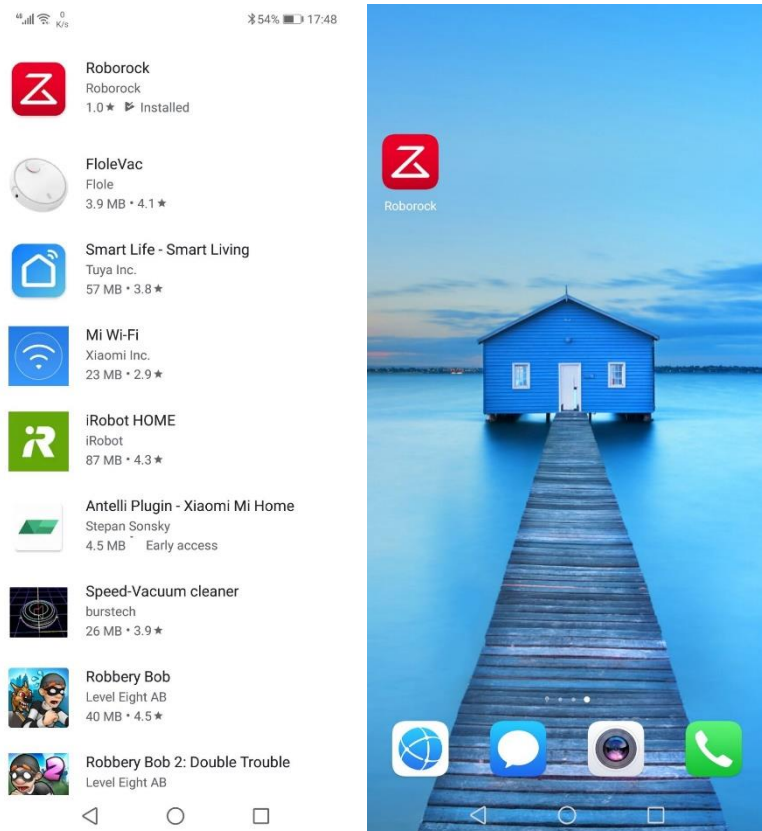
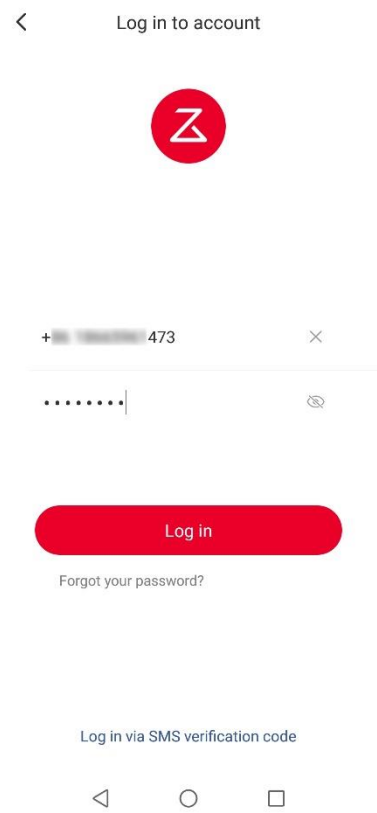
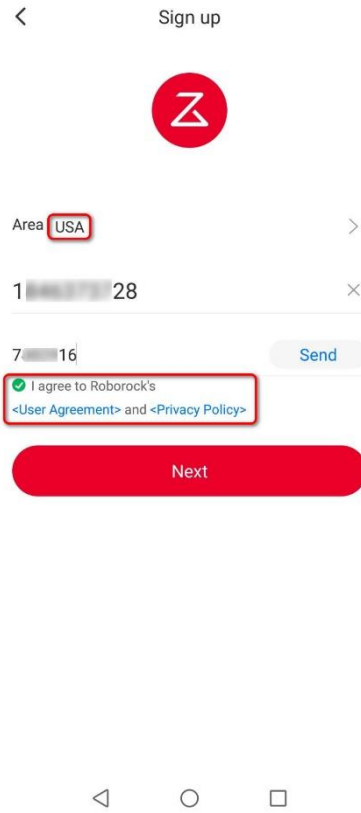


How do I connect my robot cleaner to Roborock app on an Android device?

1. Download the Roborock from Google Play.



2. Select your current region and register for a Roborock account by your phone number

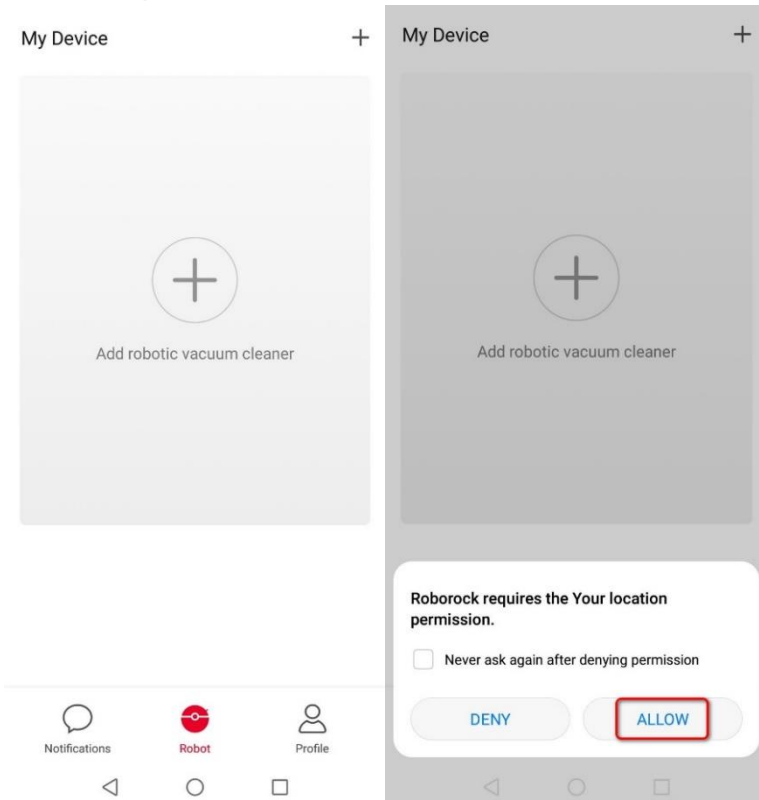


3. Connect robot cleaner to Roborock app.

Notes:

- a. Make sure your phone is already connected to Wi-Fi;*
- b. Open the top of your cleaner to see the Wi-Fi indicator light during the connection process.*

3.1 Tap the "+" icon to add a device and enable location permission.



3.2 Detect nearby devices and add your robot cleaner.

Add robot vacuum cleaner

Scanning nearby devices



Roborock S6-miap6450

Cannot detect the device? [View Help](#)



3.3 Select your home Wi-Fi and input your Wi-Fi password.

Select your WiFi



your home wifi

your home password

*The robot does not support a 5G WiFi

Remember password

Next

Robot is being connected



Please keep your phone, robot, and router as close to each other as possible

- Phone is connecting to device...
- Transferring information to device...
- Device is connecting to network...

Use now



4. Tap the device in the Roborock homepage to Access device to operate and wait until initializing reaches 100%.

