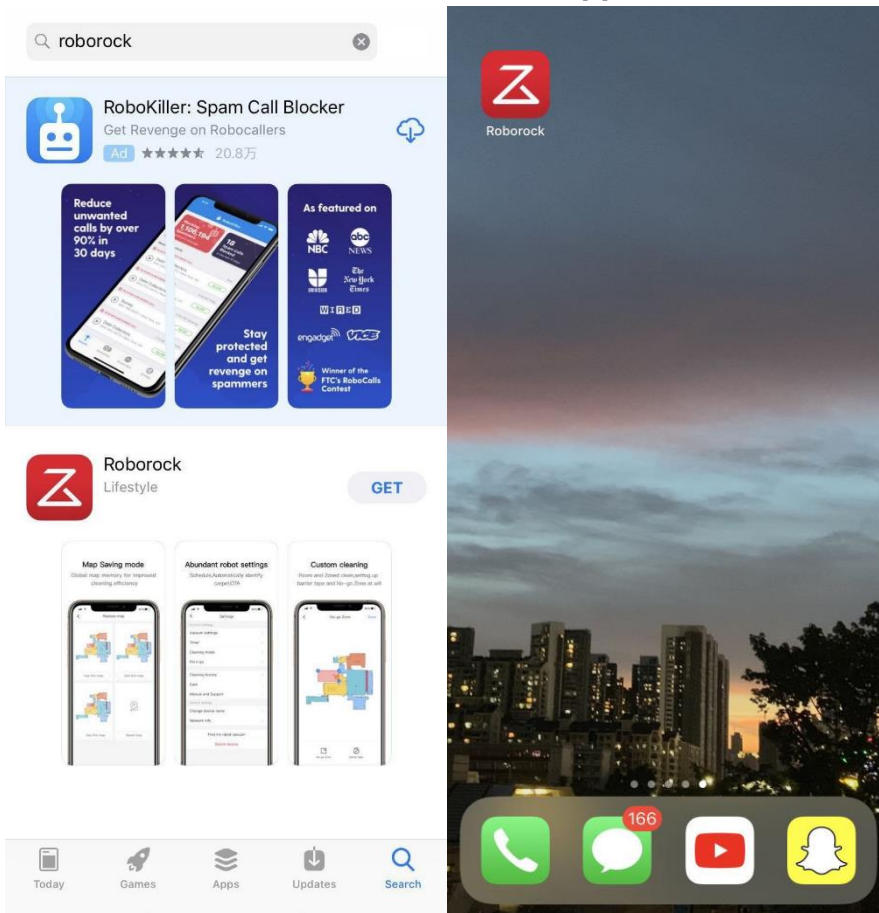
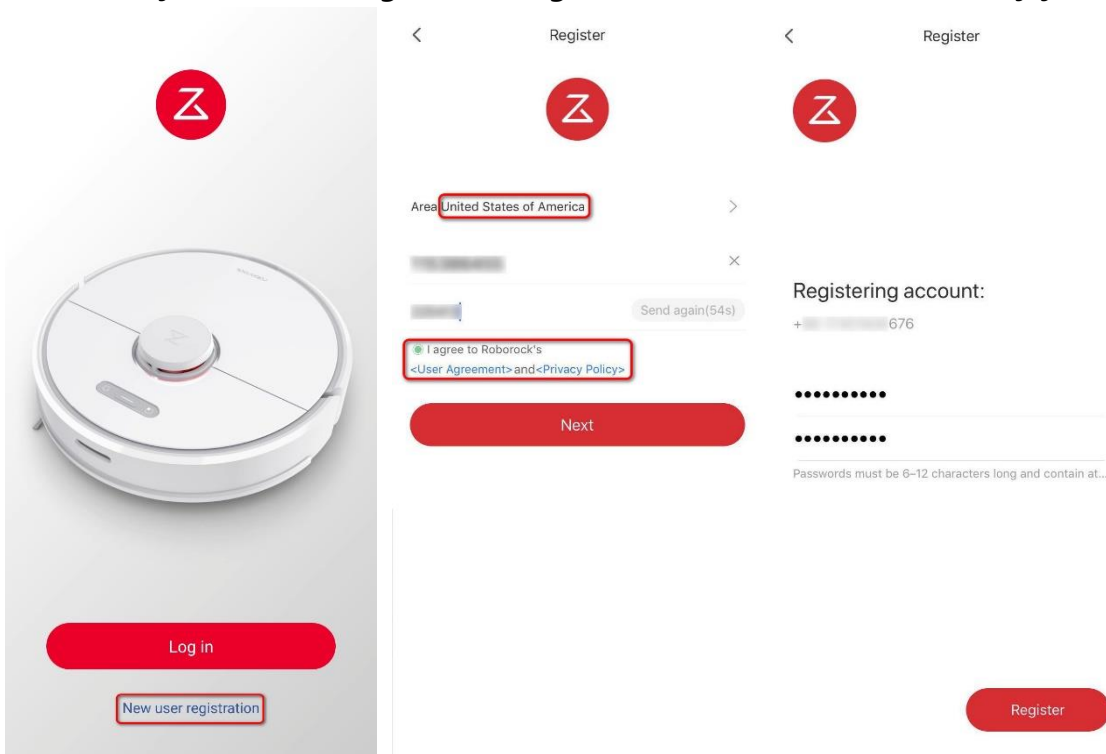


How do I connect my robot cleaner to Roborock app on an iOS device?

1. Download the Roborock from the App Store.



2. Select your current region and register for a Roborock account by your phone number.





+ [REDACTED] 473 ×

.....| 🔒

Log in

[Forgot your password?](#)

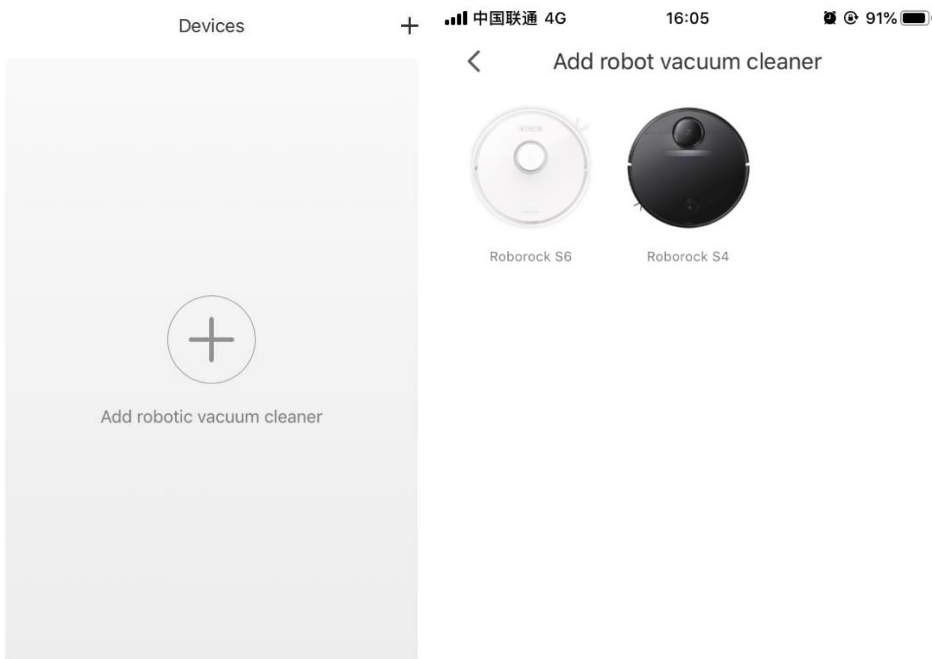
[Log in via SMS verification code](#)

3. Connect robot cleaner to Roborock app.

Notes:

- a. Make sure your phone is already connected to Wi-Fi;*
- b. Open the top of your cleaner to see the Wi-Fi indicator light during the connection process.*

3.1 Tap the “+” icon to add a device.



3.2 Check “Wifi indicator light is flashing slowly” .

< Add robot vacuum cleaner
After resetting with voice prompt, the robot is now in pairing mode, and the WiFi indicator light will flash slowly.

3. Check the "WiFi indicator is flashing slowly" box below.



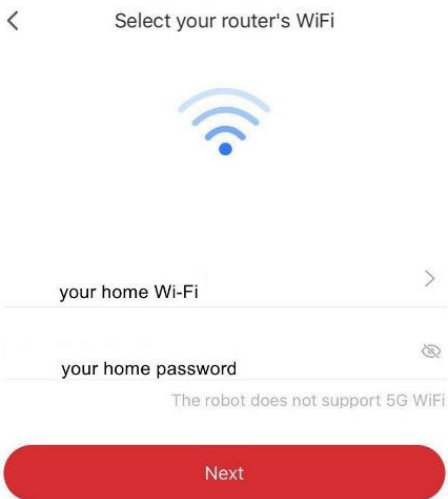
After you reset wifi, check this option first. Then tap next.

If the option is not checked, tap next doesn't respond.

WiFi indicator light is flashing slowly

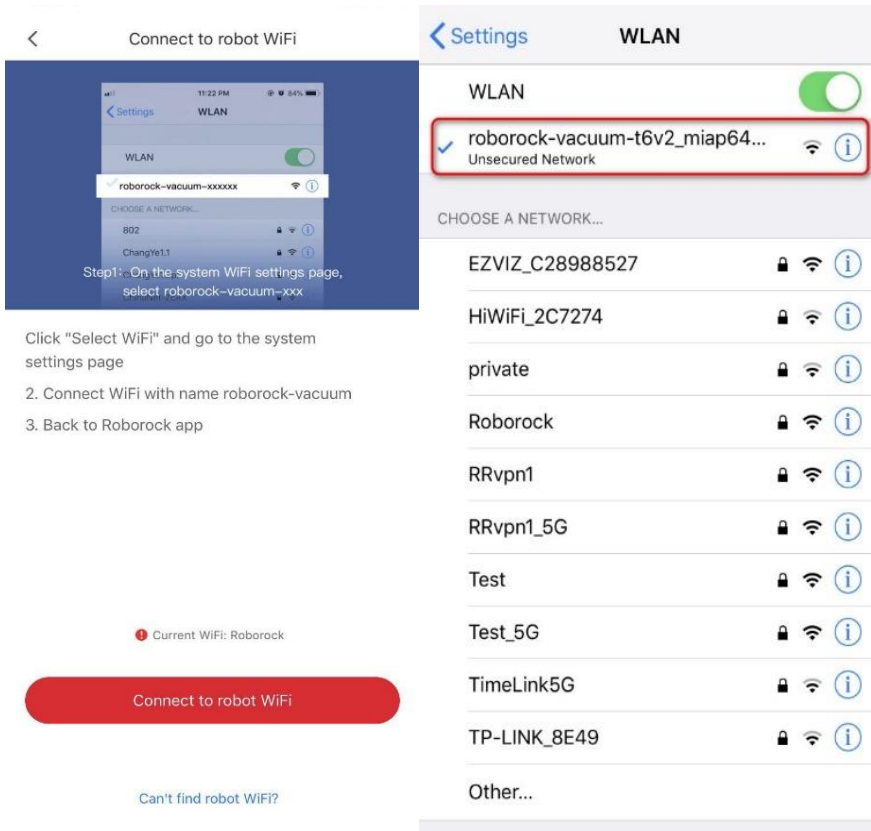
Next

3.3 Select your home Wi-Fi and input your Wi-Fi password.



3.4 Tap "Connect to robot Wi-Fi" .

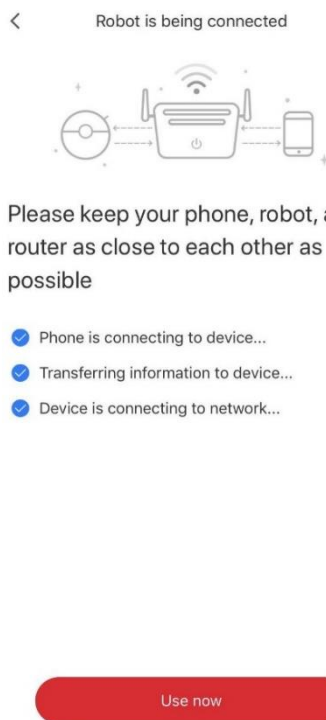
3.5 Select Wi-Fi network named roborock-vacuum-xxxx to connect.



3.6 Go back to the Roborock app and the connection interface will appear. Wait until it connects successfully.

Note:

The Wi-Fi indicator on the top of your vacuum will go from flashing to solid if it has connected successfully.



4. Tap the device in the Roborock homepage to Access device to operate and wait until initializing reaches 100%.

