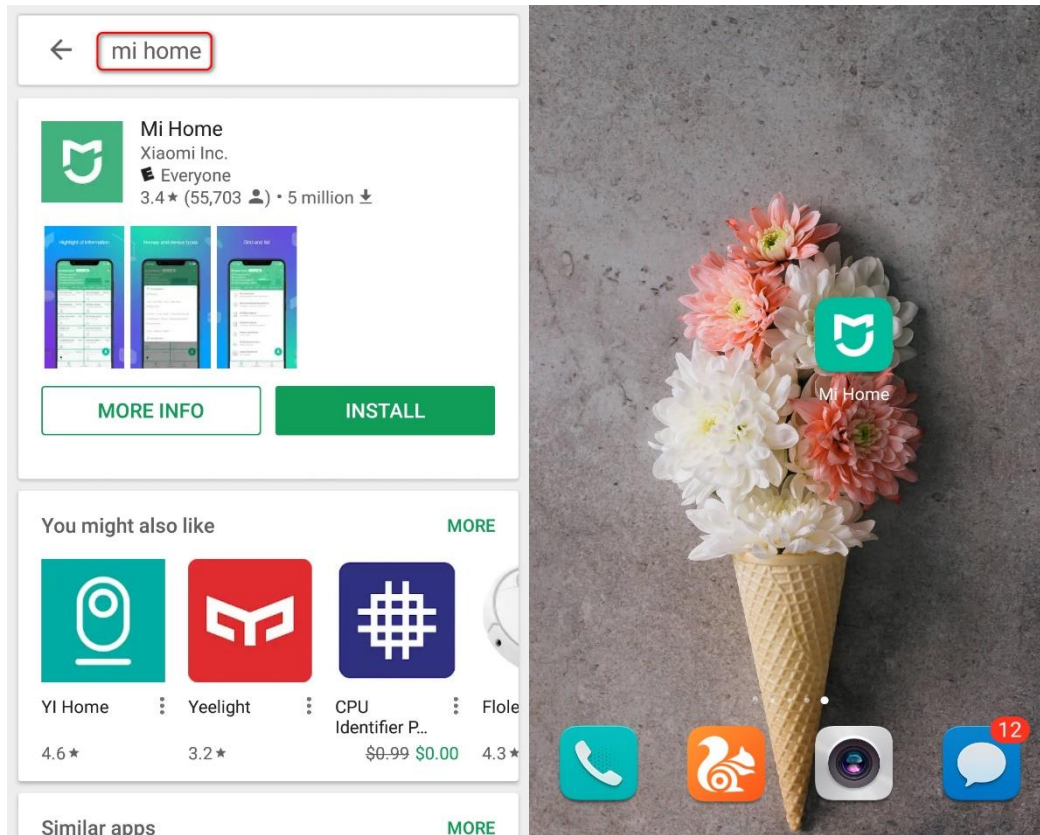
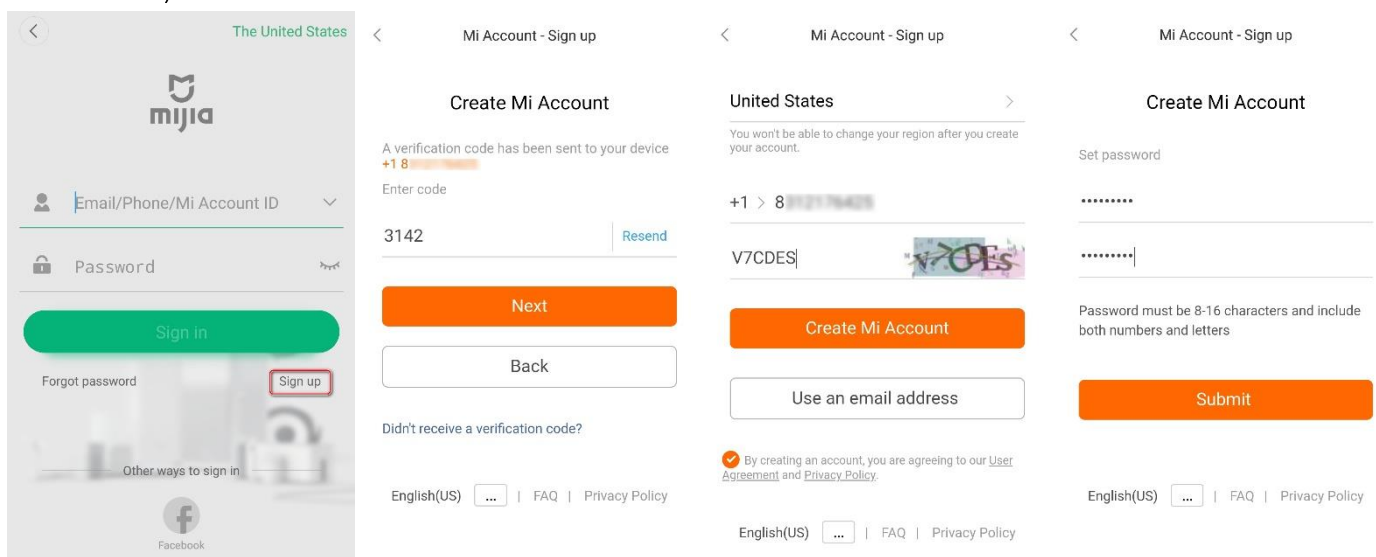


# How do I connect my Roborock cleaner to Wi-Fi using an Android device?

1. Download and install Mi Home(Xiaomi Home) from Google Play.



2. Register for a Mi Home account using your phone number (Skip this step if you already have a Mi account).

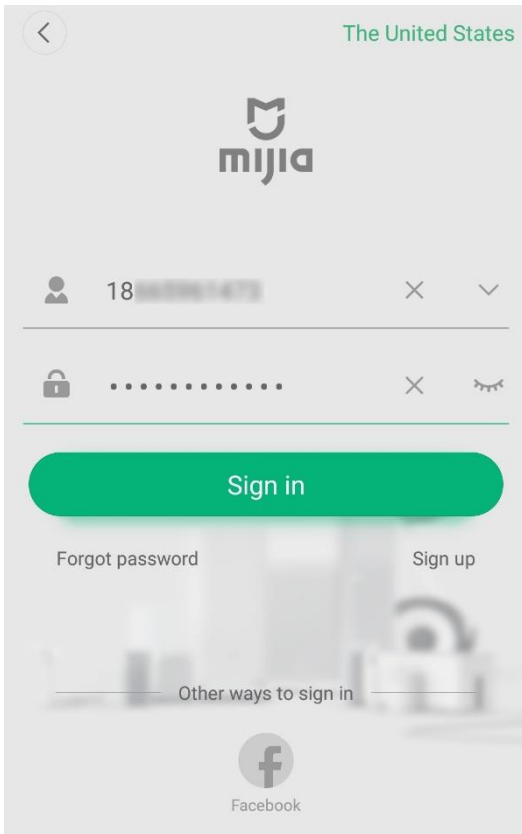


3. Add Roborock device.

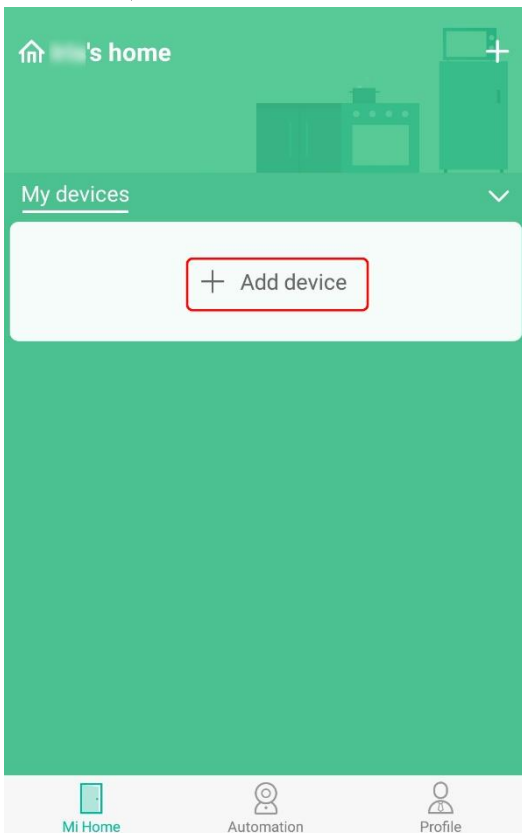
*Notes:*

- a. Make sure your phone is already connected to Wi-Fi;
- b. Open the top of your cleaner to see the Wi-Fi indicator light during the connection process.

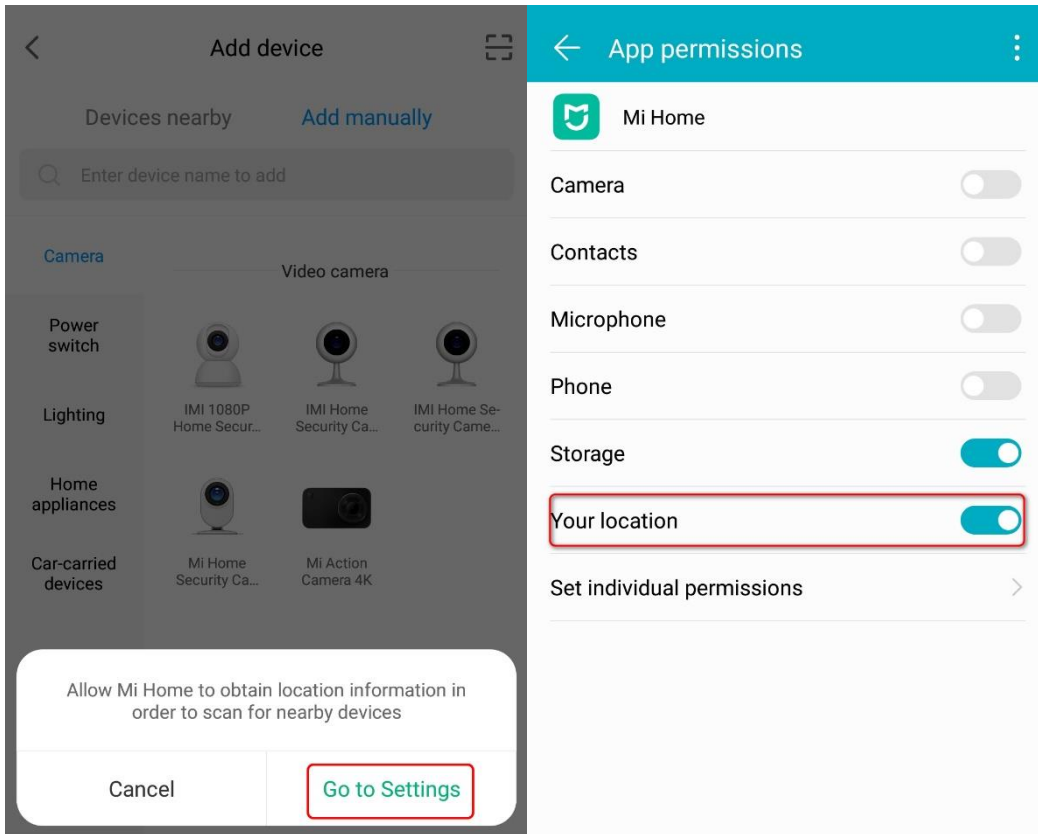
3.1 Sign in to your Mi Home account.



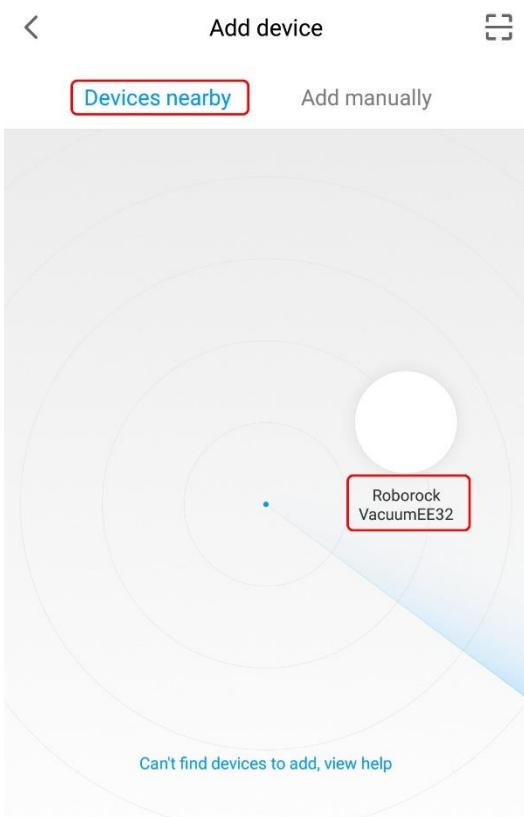
3.2 Tap Add device.



3.3 Go to your phone's settings and give Mi Home access to your home location.



3.3.1 Detect nearby devices and add your Roborock.



### 3.3.2 Devices can also be added manually.

#### 3.3.2.1 Select your device's model from the "Home appliance" category.

**roborock**

Name of Product: Robotic Vacuum Cleaner      Rated Voltage: 14.4V DC  
**Product Model: S502-00**      *model on sticker at bottom of robot*      Rated Power: 58W  
 Manufacturer: Beijing Roborock Technology Co., Ltd.  
 Address of Manufacturer: Floor 6, Suite 6016, 6017, 6018, Building C, Kangjian Baosheng Plaza, No. 8 Heiquan Road, Haidian District, Beijing, P.R. CHINA

Model number on device label	Model you should select on APP
S5xx-xx	Roborock S5
E2xx-xx E3xx-xx	Xiaowa E Series
S6xx-xx	Roborock S6
C1xx-xx	Xiaowa C1
Mi	Mi Robot Vacuum
Mi 1S	Mi Robot Vacuum 1S

#### 3.3.2.2 Tick "Operation confirmed" .

**RoboRock vacuum**

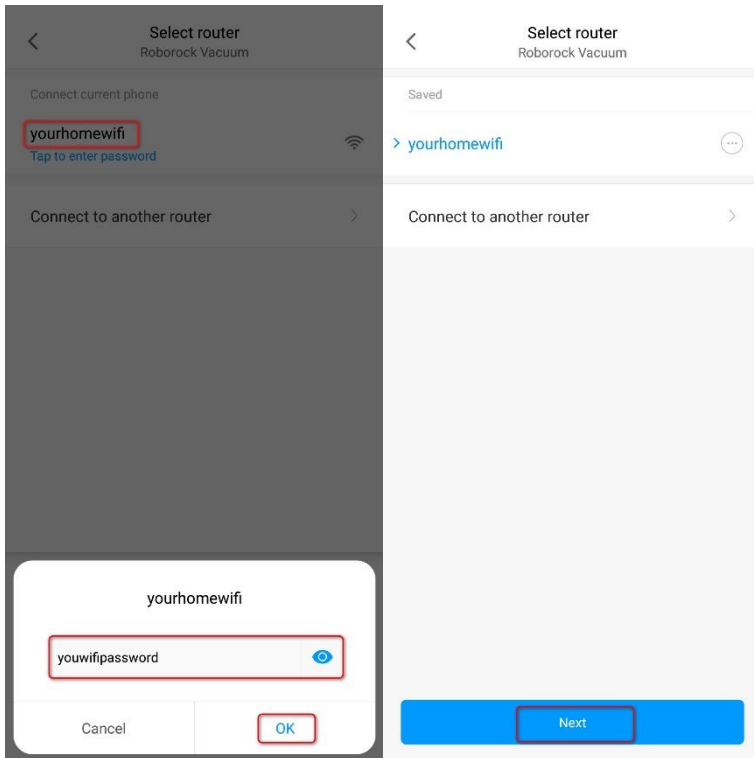
If you can't connect to the vacuum for any other reason, open the vacuum's cover so you can see the Wi-Fi indicator, then press and hold spot button and dock button simultaneously until you hear the voice prompt "Resetting Wi-Fi". Wait until the Wi-Fi indicator starts blinking to finish resetting.

After you reset wifi, check this option first. Then tap next.  
 If the option is not checked, tap next doesn't respond.

Operation confirmed

Next

3.4 Select your home Wi-Fi and input your Wi-Fi password.



3.5 Wait until your device connects to the Wi-Fi. The Wi-Fi indicator on the top of your vacuum will go from flashing to solid if it has connected successfully.

3.6 Give it a name and you are ready to control your device from the app.

