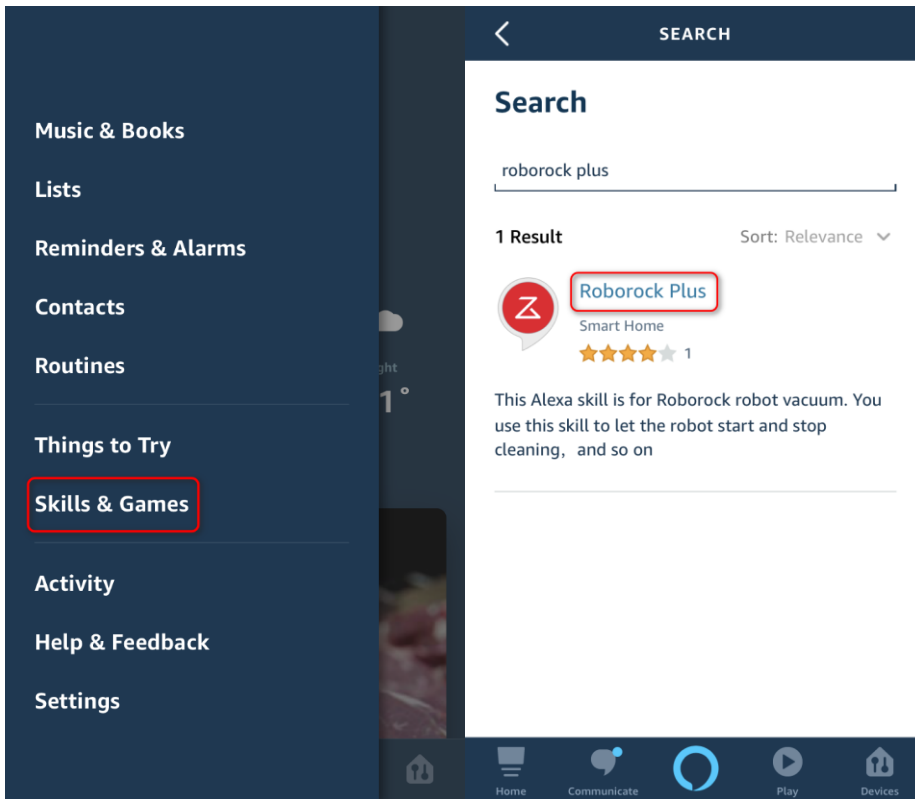


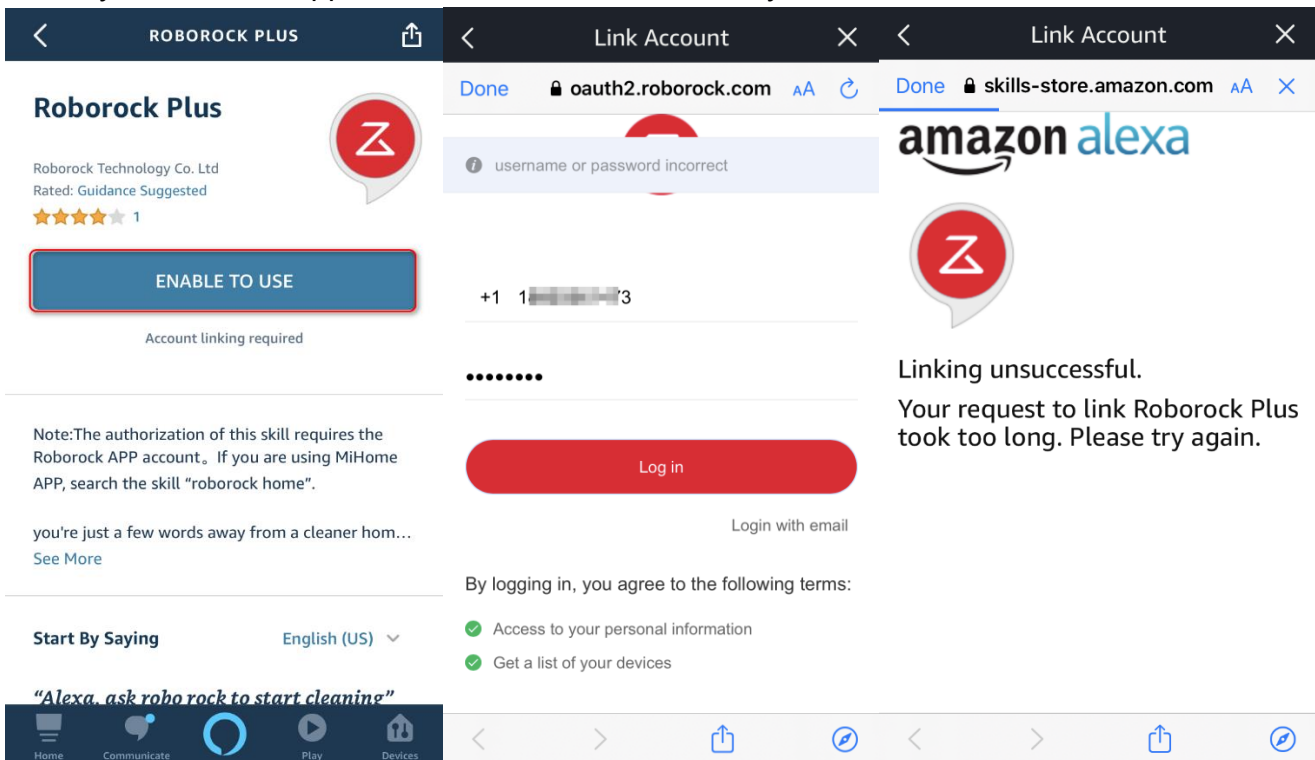
How do I use Alexa to control Roborock?

Note: Make sure your robot is added and online on app Roborock (not Mi Home) first.

1. Go to "Skills & Games" then search for "Roborock Plus" on Alexa app.

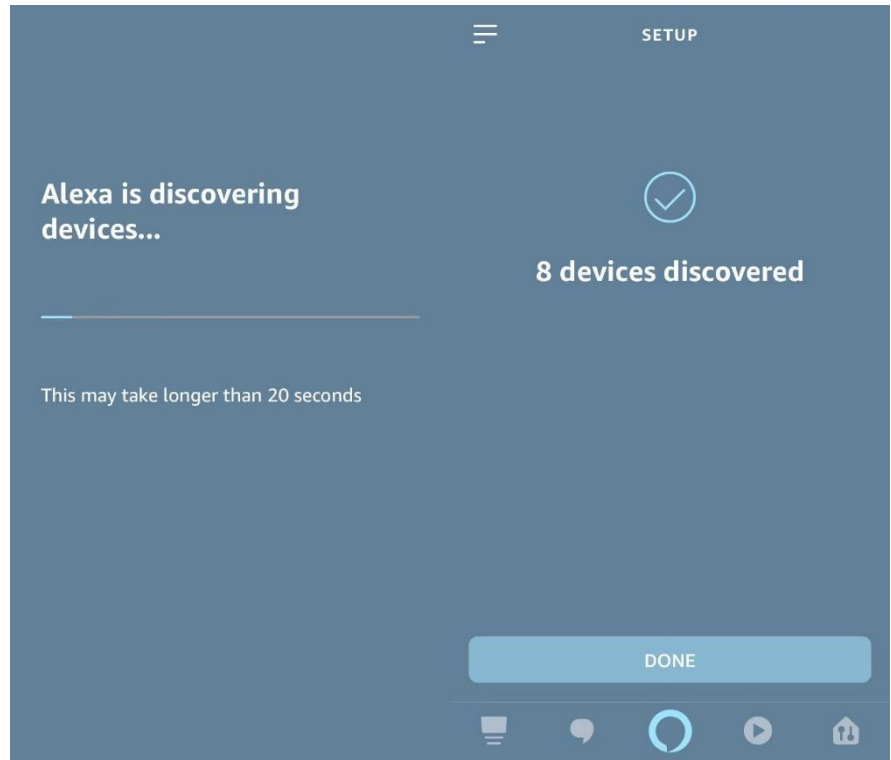


2. Link your Roboock app to Alexa to discover devices in your Roborock account that Alexa can control.

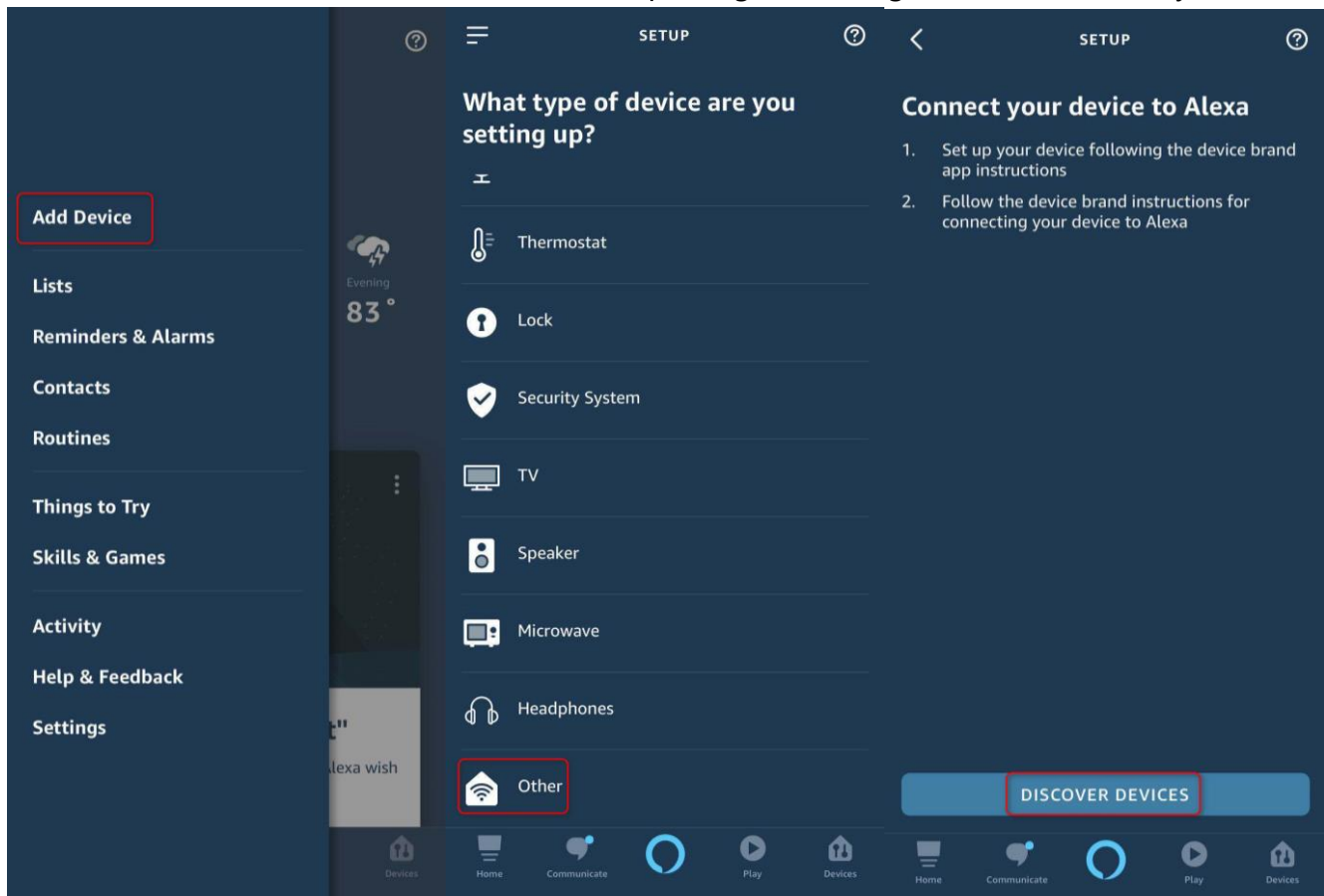


Discover Devices

Smart Home devices must be discovered before they can be used with Alexa.



3. If Alexa does not show “discover devices” option, go to setting to discover manually.



4. Go to devices list and check if the robot appears and now you can use your Alexa smart speakers to start and stop cleaning.

